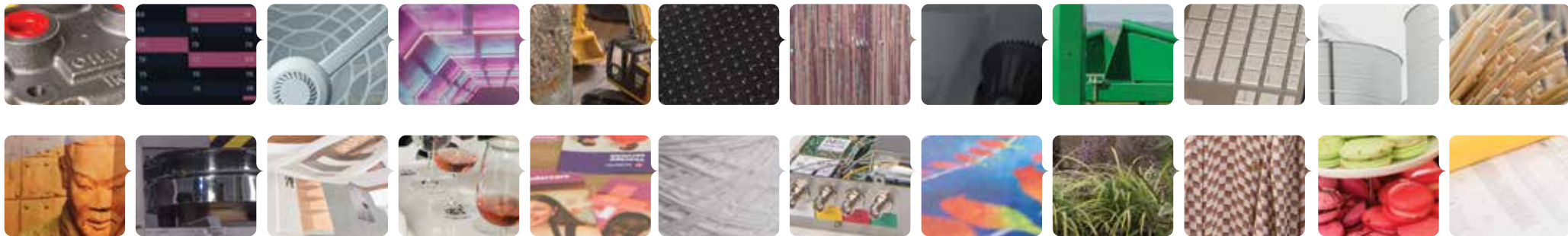




2021-22 CREATING INDUSTRY'S FUTURE LEADERS



“Being awarded the inaugural Colin J Peters AM Memorial Award in 2020 was one of the proudest moments of my career. Mr Peters was a doyen of manufacturing in South Australia and a key instigator of the ILF. I am delighted through my business, REDARC to be able to contribute to the economic development and job creation in SA and follow in his footsteps.”

— **Anthony Kittel** REDARC Electronics



Contents

- 5** What We Do
- 6** CEO, Geoff Vogt
- 7** The Board
- 8** Colin J Peters AM Memorial Award
- 10** The David B McNeil Transformative Leadership Program Award
- 11** Foundation / History
- 12** 2021 Scholars
- 33** Through The Years
- 34** ILF Scholars Network Update
- 36** Past Scholars
 - 38.** 2020
 - 40.** 2019
 - 42.** 2018
 - 44.** 2017
 - 46.** 2016
 - 47.** 2015
 - 49.** 2014
 - 51.** 2013
 - 52.** 2012
 - 53.** 2011
 - 53.** 2010
- 54** Information & Contacts

Now in its twelfth year,
the fund has awarded
237 grants, with a total
value of \$2,862,000.

WHAT WE DO

know someone with future leadership potential?

The Industry Leaders Fund (ILF) offers grants of up to \$50,000 to leaders and future leaders of South Australian industry. This funding helps successful applicants to achieve their full potential and fast-track their career success by building knowledge and experience.

wealth-creating opportunities for our state

ILF Scholars will be equipped to re-establish a “head office” mentality for our state by generating world class, value-adding opportunities that create wealth and support economic prosperity.

who are we?

In 2009, the Industry Leaders Fund was established, financed by accumulated surpluses from its former role as a state-based apprentice training scheme. It was given a new role to foster industry leadership in South Australia. Now in its twelfth year, the fund has awarded 237 grants, with a total value of \$2,862,000.

In addition to paying these grants, the fund has paid all its operating costs and more than maintained the value of the initial investment in real terms, indexed by CPI.

recognition and achievement

The significant growth and diversity of ILF applications is testament to the quality of the fund and the widespread industry support for leadership training that achieves real results for our state. The ILF has cemented its position as the leading fund in its field. We seek to under promise and over deliver.

Our application process is comprehensive yet uncomplicated, providing added incentive for the best candidates to apply.

private funding

The ILF is a private sector non-government organisation with an eminent board of 10 Honorary members. We are fully private-sector funded from investment earnings on a prudently structured portfolio. Grants up to \$50,000 may be offered to successful applicants to develop their leadership skills, experience and knowledge through research, education and/or training at nominated best-practice education facilities in Australia and abroad.

sharing the benefits of talent

We believe in the value of learning for the common good and are committed to supporting those who share this belief.

ILF funding is available to candidates who can display the following:

- Leadership potential, interest and abilities demonstrated by relevant roles at work and/or in the community.
- Interest in sharing their talents, knowledge and achievements with the industry in which they work and the community in which they live.

assessment process

ILF assessment involves a three-stage process. Application forms required for the first two stages are available at

www.industryleaders.com.au

and submissions are lodged online. The third stage is a panel interview with Board members.

Geoff Vogt

Chief Executive Officer

Geoff Vogt has extensive experience in the financial services and insurance sectors, and was chief executive officer of the Motor Accident Commission in South Australia for almost 12 years.

He is a director of Key Invest Limited and a director of a number of other organisations.

Previously, he held branch and head office financial positions with a major Australian life insurer, in merchant banking money market and advisory roles and as the manager of group funding for a major listed Australian corporation. Geoff was also an adviser to the Deputy Premier.

Geoff believes true leaders exhibit vision, superior communication skills, passion, a powerful drive to succeed, strong inter-personal skills, charisma, inspirational team building capacities, strong moral ethics and a willingness to contribute to their community.



The record number and exceptional calibre of applications this year is testament to the improved profile of the ILF and strong support from current Scholars to encourage good applicants to come forward. Pleasingly, the amount of female applicants was much greater this year, allowing us to offer grants to a historic high number of female business leaders – a record equalling 38.5% of all recipients. This figure compares favourably with two recent indices. The 2020 Chief Executive Women ASX200 census shows women comprise 25% of executive leadership teams, while the Workplace Gender Equality Agency recorded females occupying 32.5% of key management positions. However, we want to do better. This requires more quality female applicants to come forward. Our Scholars have told us modifying existing entry requirements to ensure higher female representation is unacceptable.

The value of grants this year is a record and was able to be comfortably funded because of the ILF's prudent investment policy and a very strong stock market performance. If this is a once-off as many advisers predict, similar granting will be difficult to justify in the future unless more funds are found through donations and bequests.

BOARD



Richard Colebatch
Honorary President

After a long career in manufacturing, successfully utilising team culture, Richard is convinced that our future prosperity in value-adding pursuits will be enhanced by encouraging and recognising our future and current leaders. The ILF supports this approach in a practical and measured way.



David Heaslip
Honorary Vice President

David manages a diversified manufacturing business undergoing considerable development as it confronts a rapidly changing manufacturing environment. He is an ILF scholar and understands the contribution the ILF can make towards the development of South Australia's future leaders. Strong, capable leaders will be the foundation for a thriving business community and prosperous South Australia.



Paul Haysman
Honorary Immediate Past President

A chartered accountant, manufacturing managing director, board director and successful business owner, Paul believes that an important element of future economic and social success for South Australia will be strong business leadership. His hope is that the ILF will add substantially to the leadership capital of industry in our state.



David McNeil
Honorary Emeritus Board Member

David has experience over a large cross-section of businesses, including manufacturing industries. This has been both at CEO and board level, as director and chairman. David is chairman of Tyree Industries, Tytronics and AEM Cores. Service as chairman on various Government boards and Industry associations has given David an understanding of a broad cross-section of the South Australian economy. David's vision is to see South Australia as a leading centre for smart competitive businesses with head office mentality and wealth creation powers. The ILF is a private sector initiative that is becoming recognised as a major contributor to developing our future leaders and our state economy.



Kris Lloyd AM
Honorary Board Member

Kris Lloyd is Director and Head cheesemaker of Woodside Cheese Wrights, established in 1994. Kris founded CheeseFest & FERMENT Festival in 2006, and has received many personal awards including the Telstra Business Women's National Award for Business Innovation in 2010, induction into the prestigious International Cheesemakers Guild des Fromagers in France in 2012, and was awarded Member of the Order of Australia (AM) in the 2020 Queens Birthday Honours list.

Kris is very passionate about "leadership" and plans to use her influence on the Board to ensure the ILF continues to assist its many Scholars and future applicants to reach the next level in their careers and leadership journey.



Mark Canny
Honorary Deputy President / Treasurer

After 20 years with Hills as the MD of the UK subsidiary company and then GM of the Australian-branded products business, Mark spent five years as CEO of Australia's largest independent iron foundry group, Intercast and Forge. He believes that great leadership is vital to the success of organisations and that helping to develop leaders is a key step in SA's journey to prosperity.



Stephen Ludlam
Honorary Board Member

Steve is an engineer and an experienced Defence Industry leader and expert. He has worked across the breadth of the industry from R&D to MD and was the MD and CEO of ASC Pty Ltd. He believes that strong leadership is the key to business success and vital to the progressive growth of industry in SA. The need for continuous development of leadership skills is paramount and the ILF is uniquely able to provide the opportunity and, thereby, make a significant contribution to the economic development of the state.



Stephen Myatt
Honorary Board Member

Stephen is chief at Australian Industry Group South Australian Branch (Ai Group) – a leading industry association in Australia. He believes the ILF plays a vital role in ensuring present and emerging future leaders have the contemporary skills, knowledge and experience to lead and grow their South Australian businesses.



Stephen Richter
Honorary Board Member

Stephen is the managing director of an old but innovative manufacturing business in the mining and smelting industry. Stephen believes that strong leadership in the manufacturing environment is the way forward as the old established regimes give way to new and innovative methods. He sees the ILF as a major contributor to leadership within South Australia.



Chris Stathy OAM
Honorary Board Member

Chris Stathy OAM is a highly respected and experienced business leader and company director with a proven track record in national and global markets across industry sectors. He sees the ILF as an opportunity to build a better future for industry in SA, so there will be more head offices, employment and wealth generated here.



Michael Tamasi
Honorary Board Member

Michael is a self made leader working up from the factory floor at GMH to become MD at New Castalloy, of which he has recently had to oversee plant closure. He believes that leadership development is a never ending curve and is a strong supporter of the ILF.

THE COLIN J PETERS AM MEMORIAL AWARD

History

This award is made possible following a generous donation gifted in February 2020 by Nicole Peake and Scott Peters, in memory of their father, Colin Peters AM (1943 - 2019).

Colin John Peters AM ("Col") was the inaugural Chairman and leader of three visionary leaders who had the insight and foresight to create the Industry Leaders Fund. Col, with David McNeil as Treasurer and Stephen Myatt of EEASA saw that South Australia needed a boost in private sector activity. Together they identified that the ingredient most needed was confident, competent industry leadership in the private sector.

They had formed what was effectively the executive committee of the board of the Engineering Employers Association of SA Group Training Scheme ("AIGTS") which on 30 June 2009 ceased to operate as a Group Training Scheme. The Board had to decide whether the not-for-profit AIGTS would use the \$8m of retained earnings to do something similar or pay the money to the State Treasury. A recommendation crafted by the three under Col's guidance led the board to conclude that the funds should be devoted to developing leaders in wealth creating private sector South Australian businesses. They believed that appropriate developmental opportunities would enable these leaders to grow their businesses bigger and faster than would have been the case without that opportunity, and the Industry Leaders Fund was born.

Everyone who knew Col knows that in life he was a big man in every way. He played a huge role in starting the ILF, he featured large as the guiding hand of the ILF during the formative years, he played a big role in setting the conditions that would enable the ILF to become an enduring initiative, and until his passing he played a major role in its development. He worked up front and behind the scenes and always offered inspirational thoughts and positive words of encouragement. The big man has left a big legacy that should endure well into the future, if not forever. The Board and management of the ILF understand the responsibility he has left for us.

Col was a good friend, mentor to many and esteemed industry champion who will be greatly missed, but not forgotten thanks to the magnanimous generosity of his children, Nicole Peake and Scott Peters.



Criteria

The Scholar who is to receive the award is determined by the ILF Board based on a series of criteria which epitomise the ethos of the ILF and the life values and community contribution of Colin Peters AM.

The primary condition is that the Scholar selected must be engaged in some way in manufacturing which includes any business using components, parts or raw materials to make a finished good or fits the definition of manufacturing as it may evolve in future.

The selected Scholar will be one who also best satisfies a combination of some or all of the following characteristics:

1. Is considered to have the potential to make the biggest difference in terms of employment and wealth generation in South Australia;
2. best epitomises the ILF values and is considered to be a high achiever in contributing to the goals of the ILF;
3. invests time and/or resources in developing the industrial and leadership talents of younger members of the workforce;
4. has contributed to the success of industry and economic development in South Australia through voluntary contributions in industry associations or other like bodies;
5. has overcome adversity or disadvantage to reach a position of leadership;
6. has already demonstrated business leadership capabilities in contributing to community activities and outcomes;
7. demonstrates a desire to develop their leadership skills through a combination of an official course and a more practical learning experience such as a relevant tour.

Nature of Award.

Monetary grants will be provided from the earnings on the donated capital after an allowance is made for CPI to ensure the real value of the corpus is maintained. The award will normally be made each year and may be for a monetary amount for a grant applicant in that year, or it may be made to a current Scholar who has not applied for a grant, in which case no actual grant amount is awarded.

Inaugural Recipient

In 2020, after careful consideration the Board felt that Anthony Kittel was a standout Scholar for the first ever award of the Colin J Peters AM Memorial Award. Anthony Kittel exhibits all the characteristics the ILF would hope to see in its Scholars and set the bar high for those who follow.

2021 Recipient

Aaron Bain, General Manager, Rural Division for Ahrens Group, stood out this year amongst a very strong field. His record of achievement at work and in his community activities in the face of significant challenge at the tender age of 28 is impressive to say the least. In many ways the Board concluded he resembles what Col would have been like at a similar age.

The ILF congratulates Aaron on being selected for this award.



THE DAVID B MCNEIL TRANSFORMATIVE LEADERSHIP PROGRAM AWARD

This new award is presented to a Scholar who has nominated to do the University of Adelaide Transformative Leadership Program. The Scholar selected will show the greatest potential to contribute more than others to employment and wealth generation in South Australia and have exhibited entrepreneurial flair in their workplace to date.

The award is made possible by a generous "Living Bequest" donated to the ILF by David McNeil. The bequest will provide for the grant supplement explained below and build a corpus which could over time fund the grant to be offered in perpetuity. David is one of the three visionary leaders, along with the late Col Peters AM and Stephen Myatt, who jointly created the Industry Leaders Fund when the Engineering Employers Association of SA Group Training Scheme ceased to operate. As Treasurer for many years, he set the foundations for and shepherded the financial success which is the cornerstone of the accomplishments of the ILF to date. His term as Treasurer was followed by two years as the second President of the ILF, following the retirement of Col Peters. He is an Emeritus Member of the Industry Leaders Fund and continues to provide valuable service, guidance, and insights as a member of the Board today.

David has had a long and highly successful entrepreneurial career in multiple businesses, many of which have seen significant growth under his leadership. His services have also been regularly sought after to turn around businesses that are in difficult circumstances. David has served on many government, business and educational boards and was an office bearer for the Australian Industry Group SA branch and nationally for several decades.

Nature of the Grant

The grant will provide an additional top up to the standard grant amount that would be offered for a Scholar attending the Transformative Leadership Program in any year.



Inaugural Recipient

Ben Klason, National Enterprise and Marketing Manager for LEADER, is the inaugural recipient of this award. Working for a LEADER-authorized agent in a regional town, he was offered a position to join the company. Within 12 months, he relocated to Melbourne to establish a new warehouse and office, which grew beyond expectations. After a few short years in that role, Ben relocated to Adelaide and was subsequently promoted to his current role. His innovation and development skills have been instrumental in the rapid growth of the largest Australian-owned computer manufacturer in the country. The Board was conscious the inaugural recipient would set the benchmark for future recipients and Ben was chosen after very careful and thorough consideration. We congratulate Ben on his achievement and look forward to watching his career path and business success unfold.



INDUSTRY LEADERS CHAIRMAN'S FOUNDATION

The ILF is increasingly recognised as the foremost educational grant provider in South Australia, attracting applications from exceptional future leaders and entrepreneurs. This demand is exceeding the fund's capacity and we are developing new models that will enable us to support deserving applicants well into the future.

To supplement the ILF's capacity we unveiled the Industry Leaders Chairman's Foundation to provide a flexible structure for committed individuals and businesses who support our vision for a strong South Australian economy. Contributions directly assist future leaders to make a real difference to the state of play in South Australia in coming years.

The Industry Leaders Chairman's Foundation accepts contributions and bequests from individuals and businesses and allows for tax deductibility. It has been developed to ensure your contribution is tailored to meet your specific needs.

The Industry Leaders Chairman's Foundation is administered by the trustee, the Industry Leaders Fund, and attracts no administration fees or charges. One hundred per cent of the benefits are directed to successful applicants.

If you would like to partner with us to help ensure the state's future innovation, wealth and prosperity, please get in touch. We invite you to share your thoughts with the CEO of the Industry Leaders Fund in the strictest confidence.

ILF HISTORY

The Industry Leaders Fund was established in 2009 with adequate endowment funds to ensure a perpetual flow of cash to support our annual grants program.

The prime movers were three visionary leaders, Chairman Col Peters, Treasurer David McNeil and Australian Industry Group SA Director, Stephen Myatt. They entrusted the realisation of the vision to Geoff Vogt who commenced as CEO in February 2010 after an extensive search.

The first awards were presented in November 2010 to Anthony Kittel, Managing Director of REDARC and Christine Stock, who had demonstrated outstanding talent and leadership potential during an apprenticeship with The Engineering Employers Association Group Training Scheme.

By 2013, there were 35 Scholars and the Board felt it was time to establish a network of Scholars. Anthony Kittel agreed to be the inaugural chairman of the Scholars committee and under his guidance a program of Scholar events was organised. The number and range of Scholar activities and events has grown under successive chairs, Eddie Lane, Kris Lloyd, Darren Turner and David Hart. These activities are highly valued and the prospect of joining the Scholars Network has become an important motivator for many leaders to seek a grant from the ILF.

A noticeable change over time has been the industry makeup of the Scholars, from the early years where established manufacturers of traditional physical products predominated to an increasing proportion of new age industries including those producing intangible intellectual property. This trend is in line with the makeup of industry in South Australia.

The Board has focused on measuring outcomes to drive performance. Financially we strive to maintain the real value of the \$8m initial fund after grants and the costs of running the fund. We have been successful in this aim and the current value of the fund, as at 31 August 2021, was \$14.0m, after grants of more than \$1.7m and paying all administration costs.

The ILF adopted an "under-promise" and "over-deliver" approach from the beginning. Promotion has been by word-of-mouth and targeted personal approach rather than through mass media or large functions. Strong candidates have been attracted this way and the results of their endeavours post ILF funded study course are measured through an annual survey. Recognition of their achievements has been achieved through multiple public awards that are documented elsewhere in this brochure. A really strong measure is the number of jobs generated in the businesses of our Scholars since course completion. The first survey was conducted in 2016 when 142 jobs had been created in South Australia. By 2021 new jobs created in SA had increased to 2632. The average grant dollar cost per South Australian job declined from \$7,600 in 2016 to \$800 in 2021. This is much lower than other job creation programs in South Australia and favourable comparison has been drawn against worldwide benchmarks.

All this has been made possible by a dedicated hard-working Board, chaired initially by Col Peters, followed by David McNeil, Paul Haysman and most recently by Richard Colebatch.

2021 Scholars



Christie Bailey

Director
Brown Falconer

28 Chesser Street, Adelaide

Brown Falconer is a 75 year old Adelaide based design practice valuing knowledge driven design that is impactful, functional and creates a legacy. To support clients and partners beyond SA, smaller interstate studios are established or planned, to leverage the expertise held and promote employment opportunities in Adelaide.

**Transformative Leadership Program,
University of Adelaide held in Adelaide & Texas.
\$9,000**

Christie impresses as a capable driven architect whose transition from high profile project leadership to business leadership will be enhanced by participation in the Transformative Leadership Program.

Achieving a senior leadership role in a large fast growing company at a very young age gives the ILF confidence that the potential contribution Aaron can make to the SA economy is almost limitless.



Aaron Bain

General Manager, Rural
Ahrens Group Pty Ltd

Williams Street, Shea-Oak Log

Ahrens is a major fast growing SA based one-stop shop for top quality construction, engineering, rural and mining services solutions delivered Australia wide.

**Advanced Management Program,
Melbourne Business School.
\$21,000**

Nav is a highly impressive young entrepreneurial owner and leader of an innovative educational business that attracts high-quality overseas students to South Australia.



Navtej Bal

CEO/Managing Director
Ironwood Institute

Level 3, 68 Grenfell Street, Adelaide

Ironwood is the first private institute to deliver nationally recognised agribusiness courses to international students in Adelaide, featuring a pathway to a Masters Degree program. It is dedicated to academic excellence and commitment by providing a great learning environment to allow students to undertake Horticulture, Business, Leadership and Management and Marketing and Communications courses.

**Transformative Leadership Program,
University of Adelaide held in Adelaide & Texas.
\$9,000**



Kirsty Chapman-Smith

CEO and Owner
Discount Party Supplies

59-63 Moore Road, Reynella

Discount Party Supplies is a leading online retailer, delivering boxes full of happiness for all of life's celebrations. An extensive range of party supplies, class-leading customer service, a strong team culture, and delivering on-time every-time ethos, has seen the business flourish.

**Growth Ramp Program,
UniSA – Australian Centre for
Business Growth.
\$7,000**

Kirsty has successfully built a significant enterprise, that started in her lounge room, to today, where it employs over 50 people at its distribution centre. The ILF expects accelerated growth to follow completion of the growth ramp program.



Tim Chopping

Executive Manager
SRA Information Technology

Level 6, 25 Franklin Street, Adelaide

With over 350 clients on 6 continents, SRA is a software development company delivering innovative solutions that create significant positive impact on environment, resources, energy, and the community enabling organisations to save time, reduce costs, mitigate risk, and improve performance.

**Advanced Management Program,
Melbourne Business School.
\$11,000**

With a track record of driving fast growth at SRA, Tim's course should enable him to further accelerate business and employment growth in South Australia through the company.

A quiet achieving entrepreneurial leader who has created significant economic benefits in SA, Ricardo is ready for the future challenges in energy transition.



Ricardo Conti

Chief Operating Officer, Fuels Division
Peregrine Corporation

270 The Parade, Kensington.

South Australia's largest private company with an annual turnover of \$2.6 billion and 5,000 employees, Peregrine was founded by Fred Shahin in 1984 with a single BP service station in Woodville. The group has several divisions:

- A) Retail, comprising the OTR convenience and petroleum stores, Smokemart & Giftbox chain, Krispy Kreme, and many fast food brands such as Subway, Hungry Jack's, Oporto, GYG and Wok In A Box;
- B) Wholesale, comprising wholesale tobacco and wholesale fuel distribution;
- C) Commercial Property, overseeing many high profile real estate assets across SA;
- D) Primary Produce, with farms growing grapes, almonds, olives etc;
- E) The Bend Motorsport Park, which is Australia's biggest public race track and in 2019 received the global Motorsport Facility of the Year award.

**Global CEO Program,
IESE Business School – University of Navarra.
\$20,000**

Cain impresses as a flexible hard working problem solver who can overcome challenges to transform business. In his current role he is likely to be instrumental in furthering growth of high paid IT jobs in Adelaide.



Cain Cooke

Chief Operations Officer
LogicPlus

Level 4, 70 Light Square, Adelaide

Logic Plus is a 21-year-old IT professional services provider transforming business through smarter technology investments. Living at the centre of the digital revolution Logic Plus harness change and deliver better business productivity for clients throughout Australia. Services and products include technical consulting, managed services, hosting, disaster recovery and cybersecurity with 24/7 monitoring, response, support and a data centre based in Adelaide.

Disruptive Innovation: Strategies for a Successful Enterprise,
Harvard Business School, USA
\$11,000



Gosia Davis

Head of Product Safety and Product Security
BAE Systems

1 Taranaki Road, Edinburgh

BAE Systems Australia is a national defence and security company, that can trace its history back to rocket testing in a dusty paddock at Woomera nearly 70 years ago. It has a 5000 strong workforce that supports the men and women of the Australian Defence Force. Globally, BAE Systems is one of the world's largest defence companies.

Transformative Leadership Program,
University of Adelaide held in Adelaide & Texas.
\$9,000

The training will enable Gosia to build on her passion to develop new and highly sought after sovereign defence capabilities in South Australia. Innovative solutions and locally developed defence capabilities help to grow the economy, advance Australian innovation and generate local jobs and investment.

2021 SCHOLARS



Adrien Doucet

Head of Engineering
Neumann Space

Hanson Building, Lot Fourteen, Frome Road, Adelaide

A South Australian start-up, sited with the Australian Space Agency at Lot Fourteen in Adelaide's CBD, is committed to enabling the Australian space industry with the development of a ground-breaking plasma propulsion technology, but also pioneering new ways to manoeuvre small satellites in space.

**Executive Certificate in Management and Leadership,
MIT Sloan School of Management
\$16,000**

Adrien is a highly skilled and experienced space industry leader whose potential to make an impactful contribution to the success of a high-flying startup in the fast growing space sector will be reinforced by the newfound world-class leadership learnings. Adrien expects to broaden his perspectives on entrepreneurial leadership to grow a sustainable space sector in South Australia.

With a successful track record in building high growth businesses, Sean's confidence and capacity to accelerate and expand his contribution to strengthen the SA economy will be bolstered by this course.



Sean Ebert

Executive Director / Chief Executive Officer
International Fashion Labels Group

233 North Terrace, Adelaide

International Fashion Labels Group acquired the assets of Australian Fashion Labels in March 2021 and is rebuilding the business and evolving the business model to establish an Adelaide based fashion powerhouse with global reach.

**Advanced Management & Leadership Program,
Saïd Business School UK
\$17,000**

The Transformative Leadership Program will ensure Chad's success as a new CEO, building on a highly successful track record in sales and marketing.



Chad Elson

Chief Executive Officer
Gibson Wines

190 Willows Road, Light Pass

Gibson Wines is a family owned Barossa Valley winery with 25 years of history, producing premium wines which are unique, scarce and fiercely local.

**Transformative Leadership Program,
University of Adelaide held in Adelaide & Texas.
\$9,000**



Kylee Harry

Chief Operating Officer
Hickinbotham Group

25 North Terrace, Hackney

Family-owned Hickinbotham Group has built more than 40,000 homes since being founded in 1954. South Australia's largest building and development company, now spanning two generations, has housed more than 100,000 people and developed more than 50 community estates here and interstate. More recently it has diversified into craft made spirits and is involved in a biotechnology company.

**High Potentials Leadership Program, Harvard Business School and Company Directors Course, AICD.
\$13,000**

The ILF believes Kylee has been the anchor around which the Hickinbotham group has grown to become a huge business in a very competitive market over the years. Her course will prepare her for personal growth in readiness to take even more responsibility and enable her to support and drive more growth in the group.

2021 SCHOLARS



James Higgins

Chief Executive Officer
Master Butchers Cooperative Limited
203-215 Hanson Road, Athol Park

Master Butchers Cooperative Limited is a diversified supplier of food ingredients, packaging, custom blending, machinery and protective equipment to the butchery and food manufacturing industries, and processes meat industry by-products into high quality proteins for global pet food markets.

**The Leading Change and Organisational Renewal Program,
Stanford Business School, USA.
\$11,000**

An energetic strategic thinking business leader who will drive a strong future for a significant manufacturing and distribution business.

Bianca's ability to step into leadership in the family business, and help build on her father's legacy in growing the business to be a leading travel agency at a national level, will be well enhanced by her ILF supported courses.



Bianca Hoffman

Head of Marketing
Phil Hoffman Travel

Brighton Road & Jetty Road, Glenelg

With a focus on exceptional service, Phil Hoffmann Travel is Australia's most-awarded travel agency providing holidays, corporate travel, escorted travel, cruising and more from its ten branches across South Australia.

**Professional Management Program and the Transformative Leadership Program,
University of Adelaide held in Adelaide & Texas.
\$13,000**

The Advanced Management Program will provide Dean with the wherewithal to transition to senior leadership in a major SA energy company.



Dean Johnson
 Operations Manager
 Cooper Energy
 Level 8, 70 Franklin Street, Adelaide
 Cooper Energy is an ASX listed exploration and production company that finds, develops, and commercialises oil and gas. It is a key player in the south-east Australian energy sector, supplying gas from its offshore operations and oil from onshore in the Cooper Basin.

**Advanced Management Program,
 Melbourne Business School.
 \$11,000**



Richard Jones
 Head of Analytics and Support
 MaxMine
 214 Greenhill Road, Eastwood
 Maxmine integrates business improvements, a powerful technology stack and operational analytics to deliver a large increase in value to open cut mining operations. With aggressive growth targets, MaxMine systems are already used in Africa, Queensland, and Western Australia.

**Program for Leadership Development
 Harvard Business School, USA.
 \$20,000**

As a manager at a relatively new powerhouse software development company, Richard's elevated leadership skills are likely to facilitate an acceleration of the already impressive growth rate of the business.

2021 SCHOLARS



Ben Klason

National Enterprise & Marketing Manager
LEADER

165 Franklin Street, Adelaide

LEADER is a fast growing Adelaide based PC Manufacturer, National IT Hardware Distributor, Telco Carrier and Cloud Service Provider. As a value-added and solution focused IT Distributor, they are well positioned to help their 12,000+ partners nationally to capitalise on the multi-billion dollar IT and IT Services market Australia-wide – and through that growth will lead to greater investment into their home state of SA.

**Transformative Leadership Program,
University of Adelaide held in Adelaide & Texas.
\$14,000**

As a young high achieving leader in a successful rapidly growing SA based enterprise, the ILF expects significant contribution to the SA economy will follow as Ben learns a new leadership style and personal interaction approaches at the Transformative Leadership Program.



George Korniotakis

Senior Work Health and Safety Manager
Thomas Foods International

162 Fullarton Road, Rose Park

Thomas Foods International is Australia's largest family-owned meat processor, which is consistently developing, with a world leading processing plant currently under construction in Murray Bridge, SA. The \$2 billion vertically integrated business employs over 2,000 people globally, delivering up to 170,617 tonnes annually of premium beef, lamb, mutton, goat and seafood products to customers across 80 countries, through a diverse portfolio of operations in Australia and internationally.

**MBA
University of South Australia
\$9,000**

George is a dedicated team member of the SA based company Thomas Foods International, where he has experienced career growth in a specialist area. It is anticipated that the UniSA MBA will provide George with valuable skills and knowledge, to further grow and succeed in leadership roles.

Theo's achievements at Leader demonstrate he is a quiet high achieving entrepreneur who can see an opportunity, has the courage to give it a go and the determination to make it work. He has done so in a way which has generated many jobs in South Australia and we expect his ILF grant will accelerate that trajectory.



Theo Kristoris

Managing Director and Majority Owner
LEADER Systems

165 Franklin Street, Adelaide

LEADER is a fast growing national IT&T Distributor headquartered in Franklin St, Adelaide. It is the largest Australia-owned PC manufacturer of computers and Australia's largest privately owned IT distributor.

Jim Collins 5 Day CEO Workshop USA.
\$17,000



Mark Krstic

Managing Director
The Australian Wine Research Institute

Adelaide University, Waite Campus, Urrbrae

The Australian Wine Research Institute (AWRI) is the Australian grape and wine industry's own research organisation. Its mission is to support the Australian grape and wine industry through world class research, practical solutions, commercialisation and knowledge transfer.

**Advanced Management & Leadership Programme,
Saïd Business School - University of Oxford, UK.**
\$17,000

Mark has chosen a course which will take his well-honed leadership skills to the next level with the intention of innovating and rejuvenating the Australian Wine Research Institute and Waite Research Precinct.



Shane Laidlaw

Marketing and Business Development
CABN

162 Fullarton Rd, Rose Park

CABN's Adelaide built tiny off grid self-contained sustainable custom designed tiny houses are located on secluded curated sites to allow visitors a top quality relaxed lifestyle away from the day to day pressures of modern life. These cabins are located throughout South Australia, Victoria and soon in Queensland.

CABN specialises in designing and building architectural, off grid nature-based tourist accommodation that connects people with nature, encouraging guests to switch off their technology and explore the unique landscapes and regions that surround them.

Professional Management Program and Accelerated Leadership Program, University of Adelaide, and Foundations of Directorship, AICD. \$8,000

After achieving a position of significant influence in a rapidly growing startup, formal training will provide a springboard for future promotion for Shane and future success for CABN.

Tamara is an energetic high achieving medical researcher, who is expected to lead significant growth in the fast expanding bio-med sector in SA, after transitioning to leadership roles.



Tamara Leclercq

Senior Project Officer
Adelaide BioMed City Innovation District

SAHMRI, North Terrace, Adelaide

Adelaide BioMed City Innovation District is a partner funded collaboration that aims to accelerate the entire research continuum from basic research discoveries, clinically-based research, health tech, to health services with tangibly improved health outcomes for South Australian patients. Its objective is to innovate the South Australian biomedical ecosystem, leading to job growth, new-to-world medical discoveries and investment in South Australia.

Professional Management Program and the Transformative Leadership Program, University of Adelaide held in Adelaide & Texas. \$13,000

The ILF believes David's knowledge and experience demonstrates sound potential to transition from his highly technical role at present to top level leadership roles where he can generate a significant contribution to the economy of South Australia.



David Malovka

Manager Project Controls
ElectraNet

52-55 East Terrace, Adelaide

ElectraNet owns and operates South Australia's electricity transmission network from its Adelaide head office. With 5800km of high-voltage transmission lines between generators and the distribution network, and assets worth \$3+ billion, ElectraNet is also the largest connector of wind generation in Australia.

**Strategic Leadership Programme,
Saïd Business School, Oxford and
Work experience attendance at UK Power Networks
and National Grid in the UK.
\$15,000**



Ennio Mercuri

Managing Director and Owner
Ennio International

38-44 Jacobsen Crescent, Holden Hill

Ennio is a Holden Hill based company that designs, makes, and supplies high-quality innovative nettings and casings for meat, poultry, and smallgoods producers in Australia and overseas. The family commenced knitting in the 1950s as Mercuri Knitwear and reinvented itself in the early 1980's as a manufacturer of knitted packaging products to the meat industry and in doing so, used its knitting expertise to bring innovation to this new market segment.

**Owner President Management Programme
Harvard Business School, USA.
\$20,000**

Ennio International has grown rapidly to become a world leader in knitted products for meat packaging, driven by Ennio's innovative leadership. The ILF expects the Owner President Manager Program will enable this growth to be sustained and ensure Ennio International's long term success.

2021 SCHOLARS



Paul Moore

Head of Energy
SAGE Group

F22/6 MAB Eastern Promenade
1284 South Road, Tonsley

SAGE Group is a privately-owned powerhouse embracing new-age technology across defence, smart transport, resources, utilities, energy and manufacturing. Emerging in 1994 from a backyard shed in suburban Adelaide, SAGE Group's 500-strong global workforce now spans 10 offices nationally and three in India, alongside its flagship custom-built facility at the Tonsley Innovation Precinct.

**Management Acceleration Programme,
INSEAD Asia Campus.
\$16,000**

A transition from specialist to leader, facilitated by the Management Acceleration Program, will enable Paul to contribute to more growth in the rapidly expanding SAGE Group Energy business.

Beau impresses as a quiet achieving specialist who has been instrumental in the rapid sustainable growth of Camms and is now seeking to develop a broader based leadership skill set.



Beau Murfitt

Chief Strategy Officer
Camms

391 King William Street, Adelaide

Camms is an Adelaide based internationally recognised (Gartner, Forrester, Chartis and G2 Crowd) provider of integrated SaaS solutions in risk, strategy, projects, and people to help customers globally make the right decisions, manage risks, align the talents of your organisation, and focus on what matters.

**Strategic Leadership Programme
Saïd Business School, University of Oxford UK
\$10,000**

An entrepreneurial young owner of a business which has exceeded all growth expectations, Stephanie is seeking to develop skills that will ensure her leadership abilities will keep pace with the demands of the business.



Stephanie Panait

Owner/ CEO
Eat Me Patisserie

279 Unley Road, Hyde Park

Eat Me Patisserie is a baker and wholesale supplier of top end quality baked biscuits, small cakes, and other delights.

Professional Management Program and the Transformative Leadership Program, University of Adelaide held in Adelaide & Texas. \$13,000



Lozanne Pretorius

National Learning and Talent Development
Manager
Mitsubishi Motors Australia

1 Sir Richard Williams Avenue, Adelaide Airport

Mitsubishi Motors Australia imports and distributes quality cars, SUVs and utes to meet and exceed the needs of its customers and provides technical input to vehicle design and development. It is the only major automobile manufacturer to base its Australian headquarters in South Australia.

Transformative Leadership Program, University of Adelaide held in Adelaide & Texas. \$9,000

Originally from South Africa, Lozanne has adopted South Australia as home. The ILF expects she will become an even more important contributor to the growth of the Adelaide head office of a major Australian enterprise.



Todd Shipway

Commercial Director
B L Shipway & Co Pty Ltd

217 Richmond Road, Richmond

BL Shipway is a quality company built on a foundation of experience, reputation and service, with technical specialists who help provide customised solutions for their customers' fluid power requirements.

**Transformative Leadership Program,
University of Adelaide held in Adelaide & Texas.
\$9,000**

As the next generation to lead this well-known SA family company, Todd is excited by the opportunity to drive its future growth.

Emma impresses as young, energetic, community minded, high achieving rural leader who is destined for significant leadership roles at the highest level in the future.



Emma Stone

Finance Manager
Kelly Engineering

684 Kelly Road, Booleroo Centre

Situated outside Booleroo Centre at the foothills of South Australia's Southern Flinders Ranges, Kelly Engineering manufactures tillage equipment designed to improve soil structure and productivity, manage weeds, and improve farmers' economic margins.

After 30 years of operation, the multi-award winning agribusiness now derives more than 80 per cent of its revenues from export customers across Europe, South Africa, Canada, New Zealand and the United States.

**Management Acceleration Programme,
INSEAD Singapore.
\$16,000**

With a string of innovation awards and two start-ups achieved at a very young age, Suzannah is expected to use the knowledge and networks from Stanford to fire up the current ventures and fuel a number of additional businesses which will generate more employment and wealth in South Australia.



Suzannah Toop

Founder and CEO
Virtual Agent, Lululiv

25 The Parade, Norwood

Virtual Agent is building the next generation of real estate technology. Drawing on the power of AI and automation, Virtual Agent is changing the way we engage with and use technology in rental properties.

This award-winning technology is the foundation of Lululiv. An industry first model, Lululiv offers property management as a service to Real Estate Principals across Australia, giving them the freedom to focus on selling. Lululiv has plans to expand internationally.

**Be a Leader that Matters,
Stanford Business School, USA.
\$20,000**



Yvette van Eenennaam

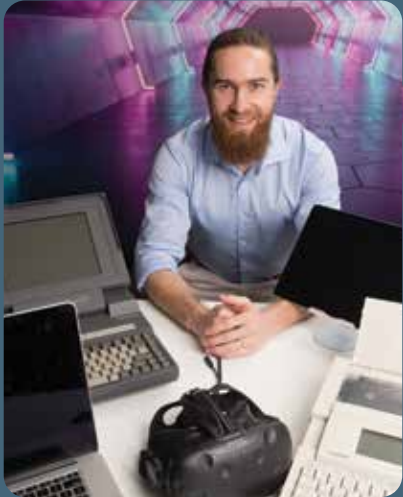
General Manager
Adelaide BioMed City Innovation District
SAHMRI, North Terrace, Adelaide

Adelaide BioMed City (ABMC) is a \$4.2B Health Innovation and Translation District in the heart of Adelaide comprised of leading-edge anchor institutes and companies, that cluster and connect with entrepreneurs, start-ups, SMEs, business incubators and accelerators. It offers mixed-use infrastructure where researchers, clinicians and students work together with entrepreneurs and leading industry players. It leverages its strong partnerships and collaborations to increase investment, grow jobs, accelerate health innovations and new to the world products, services and companies.

**Company Directors Course,
AICD.
\$6,000**

Yvette has the entrepreneurial flair and deep international experience in many of the fields necessary to fast-track the growth of the biomed sector in South Australia, one of the State's priority sectors in the Growth State Plan. The Company Directors Course will fill an important skill gap to allow her to lead Adelaide BioMed City and support the State to tap into the rapid employment growth and wealth generation the sector promises.

2021 SCHOLARS



Eric van Ryswyk

Chief Strategy Officer / Director / Part Owner
Codium Pty Ltd

8 Greenhill Road, Wayville

Codium is an Adelaide based bespoke software company delivering complex systems for a diverse range of industries locally and internationally. Its success is based on understanding the clients needs and vision well before coding commences.

**Building Sustainable Value Across Markets,
Harvard Business School, USA.
\$12,000**

The ILF expects Eric's ability to deliver the unique business strategies and system delivery approach which grows the potential of other SA businesses to expand will be significantly enhanced by his Harvard course.

Marion is a young, visionary, energetic and successful entrepreneur building a business in the fast growing sustainable industries sector.



Marion Vigot

Co-Founder/CEO
Mister RYE and Compostable Alternatives

ThinLab Waite, Urrbrae

Mister RYE utilises existing resources, circular and local production to offer local and traceable alternatives to plastic and imported drinking straws. Its goal is to offer Australian farmers a new source of income producing rye straws and promote employment in rural areas. Compostable Alternatives is a one-stop shop supporting sustainable hospitality businesses with the best and most innovative home compostable products.

**Professional Management Program,
University of Adelaide.
\$5,000**

An MBA is the ideal way for a highly respected and specialist engineer and business leader like Andrew to further enhance his career.



Andrew Warner

General Manager Energy & Resources & Company Director
Fyfe

1/124 South Terrace, Adelaide

Fyfe is a fully integrated Adelaide headquartered engineering, environment, planning, and survey firm, employing 300 staff across major capital cities and regional centres in Australia.

**MBA,
University of Adelaide.
\$11,000**



Michaela Webster

Chief Commercial Officer
G'Day Group

7/60 Light Square, Adelaide

G'day Group is the Adelaide-based parent company for Discovery Parks, G'day Parks and G'Day Rewards; the group has the largest network of holiday parks in Australia worth an estimated \$1 billion. As Australia's best regional accommodation network, the Group has reimagined the caravanning and camping industry through investing heavily in customer experience. The company is on a rapid growth trajectory and has diversified into resort, convention centre and golf course assets. It is the proud owner of Luxury Lodge of Australia El Questro, along with other celebrated Australian properties such as Kings Canyon Resort.

**Advanced Management Program,
Melbourne Business School, and
Blue Ocean Strategy, INSEAD.
\$15,000**

Michaela has demonstrated an ability to facilitate and support rapid business growth. A strategic thinker with a strength for systemisation, Michaela will take her leadership skills to the next level.

2021 SCHOLARS



Emily Welyhorskyj

Chief Operating Officer
HenderCare

Level 3, 81 Flinders Street, Adelaide

Adelaide based HenderCare provides Australia-wide health and community support to older people and those with a disability. As a community health provider they are able to deliver services on either a short or long-term basis under the NDIS, aged care or other arrangements.

General Management Programme
Harvard Business School, USA.
\$20,000

A lawyer by trade who was promoted to her current very senior role; Emily exhibits all the traits the ILF would expect to see in an outstanding leader of the future. The General Management Program will expedite her progress to top management.

Jud is a community minded leader of a major regional employer with a strong appetite for growth which will be reinforced and expedited by the knowledge gained at the Global CEO Program.



Judson Wheatley

Managing Director
De Bruin Engineering

255-261 Commercial Street West, Mt Gambier

In addition to providing general engineering services, De Bruin Engineering manufacture the Harrington Seed Destructor, which is an innovative attachment for combine harvesters to destroy weed seeds without chemicals before they can germinate.

Global CEO Program
IESE Business School
\$20,000

The key leader in a design led regional joinery business, Ellen's courses will facilitate faster growth, including through stronger networks of leaders with whom she can share experiences and continue to gather insights.



Ellen Wundersitz

Managing Director
Space Craft Joinery

54 Milnes Road, Strathalbyn

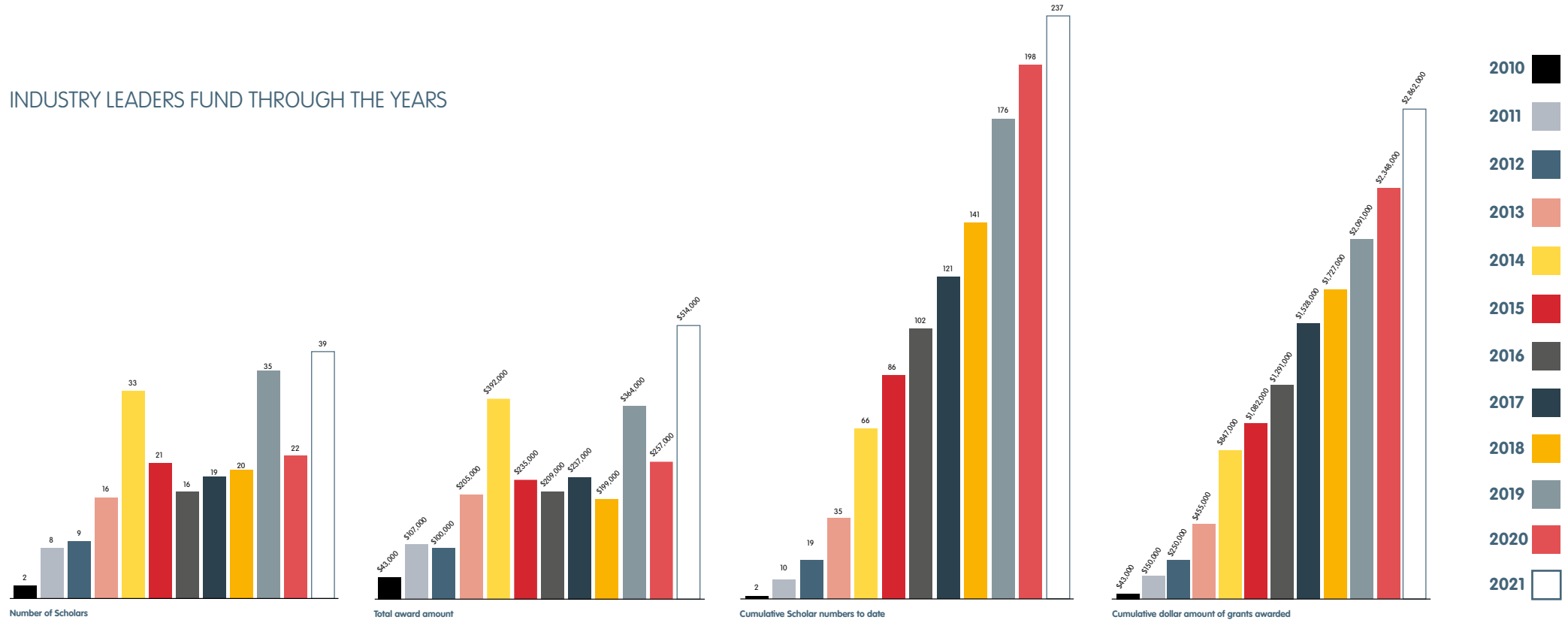
Strathalbyn based Space Craft is a family owned business focused on unique design and meticulous manufacture of boutique kitchens and whole of house cabinetry, to the highest environmental standards.

**Transformative Leadership Program,
University of Adelaide held in Adelaide & Texas and
Lean Japan Tour,
Shinka Management.
\$12,000**

“My three-year Harvard program, facilitated by the ILF, provided me with an enviable network of 320 of the world’s leading CEOs. This was vital during COVID, as we are currently deploying our software nationally across the Kingdom of Saudi Arabia and I had to setup an office with 40 employees without ever setting foot out of Australia. This was only possible through the support of my Harvard brothers residing in KSA, who aided by referring to us the expert resources needed to establish our KSA business from scratch.”

— **Patrick Power** PowerHealth Solutions

INDUSTRY LEADERS FUND THROUGH THE YEARS



ILF Scholars Network update

Network

The Industry Leaders Fund Scholars Network (ILFSN) was established by the ILF Board and a group of interested Scholars. The name reflects the commitment of its members to capitalise on their collective work, life experiences and ILF-funded learning opportunity. This will, in turn, contribute to the economic well being of South Australia.

Powerful members

The ILFSN is a specialised networking group made up of grant recipients who have operated successful South Australian businesses and achieved excellent results in the ILF leadership test, which is based on the same principles as the leadership test applied to Rhodes Scholars.

Scholars have studied, or have committed to study, at one of the world's leading business schools.



Key Events

After a slow start due to Covid restrictions, the Industry Leaders Fund Scholars Network increased the tempo of events rapidly during the second half of 2020/21.

The initial event for the year was a cocktail function featuring Alf Ianiello (ILF2011), Managing Director of the Detmold Group and the Detmold team, who explained the enormous challenges and innovative solutions adopted to build Detmold's mask making medical facility in record time. The function was held at Jarmer's Kitchen and included a walking tour of the mask factory close by. This event was sponsored by the Detmold Group and EY.

Mitsubishi Motors Australia hosted a drive day, with a variety of Pajero's, Pajero Sports and Tritons and travelled through beautiful country from Tonsley to Goolwa. Great comfort was experienced as all vehicles handled superbly on the road, but the most impressive part was arriving at the Murray Mouth where they conquered the soft sand without needing any tyre pressure reduction. Participants were well catered for with morning tea at the Goolwa Surf Club and a brilliant lunch at Angoves McLaren Vale Cellar Door. The lunch was complimented by an informative talk about the winery by

Victoria Angove (ILF 2015). Scholars have continued to talk about the experience and their gratitude for the generosity of Mitsubishi Motors Australia, their President and CEO Shaun Westcott (ILF2018) and the Mitsubishi team.

Sponsored by Grant Thornton, Axiom Precision Manufacturing hosted the Christmas breakup function with a tour of the Axiom plant. Jim Grose (ILF2016), Owner and Managing Director of Axiom, explained the business transition from auto parts supplier to hi-tech modern manufacturing. The large audience of Scholars were most impressed by Jim's forward thinking and the company's wide range of products.

Calendar 2021 opening function was a Machine Learning Breakfast held at the Novita Conference Facility, hosted and sponsored by The Smart Industries Alliance. The event provided clear insight into the meaning of machine learning, why Scholars cannot afford to ignore it and some easy steps to allow them to benefit from it. High calibre speakers included Dr Zygmunt Szpak, Senior Research Fellow at Australian Institute for Machine Learning, David Hart (ILF2014), CEO of Dematec Automation and Seth Thuraisingham (ILF2018), CEO of Consilium Technology.

The SA Mushrooms cocktail function and tour of the largest privately owned mushroom farm in South Australia attracted a large attendance. Managing Director, Nick Femia (ILF2017) explained the history of his family's business, the growing process with graphic illustrations on the big screen, which became crystal clear during the tour of the growing rooms. This event was sponsored by William Buck.

Grant Thornton sponsored and hosted a half day media training seminar delivered by Ron Kandelaars. Scholars appreciated the opportunity to learn the secrets of media management from a practitioner with deep experience. Ron has now presented to Scholars on three occasions to great acclaim, and this event booked out on the first day after invitations opened.

A very timely "Hiring and Retaining key staff" breakfast delivered by Dr Jana Matthews – Director at the Australian Centre for Business Growth – and an international expert on entrepreneurial leadership and business growth, received strong endorsement from Scholars. They found the easy to follow practical tips very valuable.

For the last event of the financial year William Buck sponsored a Strategic Planning and Implementation Training afternoon at Lot 14. Keynote speaker, Donald McGurk, Managing Director at Codan, left the audience in awe at his open and innovative approach to managing a business, including vision setting, goal fixing, an alternative approach to budgeting and the outstanding results and share price appreciation that followed. Anthony Kittel's (ILF2010) contribution to develop and MC the program was the cornerstone of the best attended and most popular event held by Scholars Network to date. Twelve ILF Scholar leaders provided discussion through four panel sessions covering the topics of Big Business, Service Industry, Startup to Big Business and Pivot.

Sponsors & Supporters

Grant Thornton and William Buck are major sponsors of the Scholars network. Their generous sponsorship enabled our Scholars to receive top quality, leading edge training without charge. ILF Scholars continue to express their great gratitude for the support of these sponsors. This new knowledge flows to improved business performance and in turn to a better economy in South Australia. Major supporters are the Smart Industries Alliance, Morgan Stanley, Deloitte and EY and their support is much appreciated.

Committee Members

David Hart, Chairman
Anne Hinton, Treasurer
Emilio De Stefano
David Evans
Shaun Westcott
Andrea Mead
Kelly Keates
Chantale Millard
Tania Jolley
David Heaslip, ILF Board Observer
Geoff Vogt, ILF CEO
Suzi Douflias, Minutes Secretary



Bottom row from left to right:
Anne Hinton, Kelly Keates, Suzi Douflias,
Shaun Westcott.

Top row left to right:
Emilio De Stefano, Chantale Millard, Geoff Vogt,
David Hart, David Evans

Not pictured:
Andrea Mead, Tania Jolley, David Heaslip

past scholars

Our ILF Scholars have enjoyed outstanding achievements over the years, reinforcing the value of our grants program to individuals, companies, and the South Australian economy. Details of just some of these achievements during the last year are:

Michael Hickinbotham's Hickinbotham Homes commenced the \$215 million Sunset housing development in the south of Adelaide.

Patrick Power signed a deal to sell a 70% stake in his PowerHealth Solutions to Telstra, with Head Office to remain in Adelaide and growth to escalate.

With export turnover increasing 50% and domestic turnover up 10%, Ennio and Mary Mercuri's Ennio International added an additional 20 staff in the first half of calendar 2021 and plan a further turnover increase of 30% in the second half of the year. In addition, they contract a lot of work to Barkuma, an NFP employing people with disabilities, and they in turn have added and will add considerably to their workforce to support Ennio.

Sage Automation leaders, Andrew Downs and Adrian Fahey announced plans to grow their workforce from 500 to 600 during 2021/22.

Adrian Fahey was appointed as the Chair of global trade body, Control System Integrators Association.

Grant Wilckens announced that the G'day Group will upgrade the McCracken Country Club to the standard of a Florida Style family golf resort, injecting \$12 million into the local economy in year 1.

Kelly Baker-Jamieson was appointed to the Premier's Council for Women.

Sascha La Forgia won the "World's Best Whiskey" award hosted by Whiskey Magazine in London for his native grain whiskey and a gold in the Blended Malt Category.

Codan's improved performance, significantly on the back of Peter Charlesworth's Minelab Metal Detector Division, saw it enter the ASX200.

The Advertiser named Corrina Wright as one of the top businesswomen of McLaren Vale.

Greg Miller was named SA's best dentist in a poll in *The Advertiser*.

Under the leadership of Andrew Kay, Wirra Wirra Vineyards won the International Best of Wine Tourism Award of Excellence, awarded by the Global Network of Great Wine Capitals.

Andrew Kay, Anthony Kittel, Victoria McClurg, and Phil Sims were named as the Who's Who of Business in SA in the *The Advertiser*.

Thomas Foods International announced it will construct a \$300 million state of the art abattoir at Murray Bridge. This project is to be managed by Nekta Nicolaou.

Lifestyle Bakery, managed by Damien Puyenbroek, won the Innovation in Food or Beverage Award at the SA Premier's Food and Beverage Awards.

Phil and Richard Sim's Robern Menz won the Consumer Award for the fourth time at the SA Premier's Food and Beverage Awards.

Daniel Le Feuvre was appointed to AgriFutures Australia Board, a commonwealth body which focuses on growing the long term prosperity of Australian rural industries.

Richard Angove

Joint Managing Director
Angove Family Winemakers
McLaren Vale
Transformative Leadership
Program,
University of Adelaide, Adelaide
and Austin, Texas.
\$7,000

**Lisa Bosworth**

Chief Financial Officer
Samaras Structural
Engineers
Gillman
Transformative Leadership
Program,
University of Adelaide, Adelaide
and Austin, Texas.
\$7,000

**Edward Carlson**

Managing Director / CEO
Lumination
Kent Town
Executive Program for Growing
Companies,
Stanford Graduate School of
Business, USA.
\$11,000

**Jarrad Casaretto**

General Manager / Owner
Casarosa Almonds
Taylorville
Jump-Starting Innovation for
Entrepreneurs & Business
Owners,
Harvard Business School, USA.
\$12,000

**Tom Cross**

Business Development
Manager - eMobility
REDARC Electronics
Lonsdale
MBA, University of Adelaide.
\$11,000

**Dion Draper**

Chief Financial Officer &
Company Secretary
SAGE Group
Eastern Promenade
Clovelly Park
Advanced Management
Program (AMPI),
Harvard Business School, USA.
\$20,000

**Alexei Fey**

CEO
Comunet Pty Ltd
Adelaide
The Oxford Strategic Leadership
Program,
University of Oxford – Saïd
Business School, UK.
\$12,000

**Matthew Hedges**

Program Manager Naval
Ships
Saab Australia
Mawson Lakes
Strategy: Building and
Sustaining Competitive
Advantage,
Harvard Business School, USA.
\$11,000

**Michael Hickenbotham**

Managing Director
Hickinbotham Group
Hackney
Owner / President
Management Program,
Harvard Business School, USA.
\$20,000

**Henri Hugo**

Commercial Director
Key Tubing and Electrical
Melrose Park
Company Directors Course,
Australian Institute of Company
Directors.
\$4,000

**Sacha La Forgia**

Founder & Head Distiller
Adelaide Hills Distillery
Hay Valley
High Performance Leadership,
University of Oxford – Saïd
Business School UK.
\$8,000

**Mitchell Lloyd**

Senior Cheese Maker /
Manager
Woodside Cheese Wrights
Woodside
MBA, University of Adelaide.
\$13,000

“The learnings from Scholar courses and networks has helped strengthen my business, and throughout Covid; the support, advice and sharing of common anxieties gave me confidence in my leadership and decision making.”

— **Matt Stein** TriCal Australia

“As a result of attending the Harvard Business School, Owner/President Management program in 2014, the most impactful takeaway for me was to focus on HBS’s most important success factors to grow a business being Strategy, Structure, Execution and Culture. The SAGE Group is on target to achieve revenue of \$220M by 2025 from a base of \$60M when I started the program.”

— **Andrew Downs** SAGE Automation

James McLeay
 Chief Commercial Officer
 LMS Energy
 Unley
 High Potentials Leadership
 Program,
 Harvard Business School, USA.
 \$11,000



Dr Greg Miller
 Chairperson / Co-Founder /
 Director Innovation
 ATI Implants
 North Adelaide
 Certificate in Global
 Management,
 INSEAD Singapore.
 \$19,000



Keetah Murphy
 Sales & Marketing
 Manager
 Spring Gully Foods
 Dry Creek
 Graduate Certificate in Business
 Administration,
 University of South Australia.
 \$8,000



Damien Puyenbroek
 General Manager &
 Business Manager
 Lifestyle Bakery
 Pooraka
 Advanced Management
 Program,
 Melbourne Business School.
 \$10,000



Damien Rankine
 Research & Quality
 Manager
 Dominant P/L
 Brompton
 MBA, University of South
 Australia.
 \$8,000



Stuart Rogers
 Director / General Manager
 Williams Metal Fabrication
 Pty Ltd
 Elizabeth South
 Advanced Management and
 Leadership Programme,
 University of Oxford – Said
 Business School UK.
 \$16,000



Shahin Sayyar Dashti
 Business Manager
 Australian Orthopaedic
 Fixation P/L
 Thebarton
 Transformative Leadership
 Program,
 INSEAD Singapore, Adelaide
 and Austin, Texas.
 \$7,000



Dr Burkhard Seifert
 Transformation –
 Entrepreneur
 OZ Minerals Ltd
 Adelaide Airport
 Management Acceleration
 Programme,
 INSEAD Singapore.
 \$16,000



Nathan Wessling
 Company Secretary / Chief
 Financial Officer
 AJ & PA McBride Ltd
 Adelaide
 Advanced Management
 Program,
 Melbourne Business School.
 \$10,000



Craige Whitton
 CEO
 Northline
 Norwood
 Advanced Management &
 Leadership Programme,
 University of Oxford – Said
 Business School UK.
 \$16,000

Herve Astier

Chief Executive Officer
Neumann Space
Adelaide
Launching New Ventures;
Jump-Starting Innovation for
Entrepreneurs and Business
Owners,
Harvard Business School,
Boston, USA.
\$12,000

**Amanda Baldwin**

Chief Investment Officer
Previously: General
Manager - Investment
G'Day Group Holdings
Adelaide
Negotiation and Competitive
Decision-Making,
Harvard Business School,
Boston, USA.
\$9,000

**Dr Nicholas Berry**

Chief Executive Officer,
Founder
Seed Terminator
Kangaroo Island
Executive Development
Program - Transforming to
Strategic Leadership,
Kellogg School of Management
at Northwestern University,
Evanston IL, USA.
\$20,000

**Iain Cartwright**

Principal Engineer:
Spacecraft and Mission
Myriota
Adelaide
Professional Management
Program plus additional
programs,
University of Adelaide, Adelaide.
\$6,000

**Adrian Cercez**

Chief Executive Officer
Chem-Supply
Gillman
Advanced Management &
Leadership Program,
Oxford Said Business School,
Oxford, UK.
\$16,000

**Joanna Chronis**

Chief Executive Officer
LogicPlus
Adelaide
Owner / President
Management Program,
Harvard Business School,
Boston, USA.
\$20,000

**Tarnia Conti**

General Manager, Strategic
Marketing Previously:
E-Mobility and Marketing
Manager
REDARC Electronics
Lonsdale
Previously: Chief Operating Officer
Lightforce Australia
Hindmarsh
Innovation for Transformation,
Professional Certificate, Flinders
University - New Venture Institute,
Tonsley.
\$5,000

**Katie Donaldson**

Managing Director
Praxis Aeronautics
Royal Park
Professional Management
Program,
University of Adelaide,
Adelaide
and
Defence Industry Study Course,
Department of Defence,
Australia.
\$9,000

**Penni-Anne Donato**

Managing Director
Allin Towbars
Richmond
Company Directors Course,
Australian Institute of Company
Directors, Adelaide.
\$5,000

**Bronte Eckermann**

Director
Eckermann and Associates
Port Adelaide
Essentials of Leadership,
London Business School,
London, UK.
\$9,000

Bill Efosinis

Business Owner
Autumn Fruits
Glossop
Agri-Food Tech and Internet
of Farms Traction Netherlands
Tour,
KPMG, Victoria.
\$10,000

Adam Faulkner

Chief Executive Officer
Northern Adelaide Waste
Management Authority
Edinburgh
The Future Thinking and Strategy
Development Course,
Melbourne Business School,
Melbourne.
\$6,000

Aaron Fiora

CEO / Captain
Ahoy Media
Previously: Marketing Director
and Business Development
Manager
Littlehampton Clay Bricks and
Pavers
Littlehampton
Advanced Management
Program,
Melbourne Business School,
Melbourne.
\$9,000

Sarah Hibbard

Chief Marketing Officer
Consilium Technology
Adelaide
International Marketing &
Strategy Program,
Zürich School of Management,
Zürich, Switzerland.
\$8,000

Julia Johnson

Director of Marketing and
Communications
Myriota
Adelaide
Executive Program for Growing
Companies,
Stanford Graduate School of
Business, USA.
\$15,000

Tania Jolley

Chief Executive Officer and
Co-Founder
DNA Security Solutions
Neiberby
Influence and Negotiation
Strategies Program,
Stanford Graduate School of
Business, USA.
\$9,000

Donald Kay

Owner
Don Alan Pty Ltd
Hindmarsh
Transformative Leadership
Program,
University of Adelaide, Adelaide
and Austin, Texas, USA.
\$7,000

Gary Krix

CEO / Managing Director /
Part Owner
Krix Loudspeakers
Hackham
Executive Program for Growing
Companies,
Stanford Graduate School of
Business, USA.
\$15,000

Jonasz Marek

Fitting Centre Manager
CSM Service Bodies
Queensland
Previously: Operations Manager
Klein Tools Australia (Mumme
Tools)
Lonsdale
Professional Management
Program,
University of Adelaide, Adelaide.
\$4,000

**Stephen McGrath**

Chief Financial Officer
Previously: Head of Finance
Peregrine Corporation
Kensington
High Performance Leadership
Program,
Oxford Said Business School,
Oxford, UK.
\$8,000

**Mary Mercuri**

Export/ Quality Manager
Ennio International
North Adelaide
Holden Hill
Aligning Strategy and Sales,
Harvard Business School,
Boston, USA.
\$10,000

**Brett Miller**

Co-Founder and Executive
Officer
ATI Implants
North Adelaide
Advanced Management &
Leadership Program,
Oxford Said Business School,
Oxford, UK.
\$16,000

**Jason Nagy**

Managing Director /
Founder
LogicPlus
Adelaide
High-Performance Leadership
Program,
IMD, Lausanne, Switzerland.
\$9,000

**Prof. Karen Nelson-Field**

Executive Director and
Founder
Centre for Amplified
Intelligence
Adelaide
Driving Profitable Growth,
Harvard Business School,
Boston, USA.
\$8,000

**Rhona Parker-Benton**

Director
Brayfield Park Lavender
Murray Bridge
Virtual Cosmetic Chemist
Internship,
Institute of Personal Care
Science, Queensland
and
The Company Directors
Course,
Australian Institute of
Company Directors,
Adelaide.
\$7,000

**Steven Patriarca**

Infrastructure Subcontract
Manager
Naval Group Australia
Keswick
Masters of Business
Administration,
University of Adelaide, Adelaide.
\$7,000

**Andrew Ramsey**

Chief Executive Officer
Mobo Group
Kent Town
Transformative Leadership
Program,
University of Adelaide, Adelaide
and Austin, Texas, USA.
\$7,000

**Vito Rinaldi**

Managing Director and
Founder
Blue Crystal Solutions
Adelaide
Owner / President
Management Program,
Harvard Business School,
Boston, USA.
\$20,000

**John Salerno**

Managing Director
Dedicated Systems
Australia
Walkerville
Driving Profitable Growth,
Harvard Business School,
Boston, USA.
\$8,000

**Ben Smit**

Chief Executive Officer and
Co Founder
Teamgag
Adelaide
High Potentials Leadership
Program,
Harvard Business School,
Boston, USA.
\$11,000

**Matthew Stead**

Chief Executive Officer and
Founder
Ping Services
Director and Founder
Resonate Systems
Adelaide
The Corporate Entrepreneur
Driving Innovation and New
Ventures Program,
Stanford Graduate School of
Business, USA.
\$16,000

**Gregory Stevens**

General Manager, Growth
& Defence
Toolcraft Australia
Holden Hill
MBA,
University of South Australia.
\$8,000

**Virginia Suttell**

Chief Financial Officer
Shoal Group
Adelaide
Strategic Leadership Program,
Oxford Said Business School,
Oxford, UK.
\$12,000

**Michael Waite**

Chief Executive Officer
Shoal Group
Adelaide
Executive Program for Growing
Companies,
Stanford Graduate School of
Business, USA.
\$16,000

**Jane Brunton (Wang)**

Commercial Manager
Oz Minerals
Adelaide Airport
Enterprise Executive Program
University of Michigan, Ann
Arbor, Mi, USA.
\$7,000

Charlotte Aykroyd

General Manager
Previously: Business
Development Manager
Australian Green Clean
Hindmarsh
Professional Management
Program,
University of Adelaide
\$4,000



Kara Beinke

Manager Business
Operations
Surveillance & Response
Systems Program Office
(SRSP0)
Adelaide
Previously: Manager Campaigns
Cobham Aviation Services
MBA, University of South Australia
\$12,000



Matthew Falzon

General Manager
Joule Energy Pty Ltd
Unley
New Leaders Development
Program,
Melbourne Business School
\$4,000



Stephen Faulkner

CEO
PMB Defence
Osborne
Owner President Management
Program,
Harvard Business School, USA
\$20,000



David Haley

Director \ Co-founder \
Chief Technology Officer
Myriota Pty Ltd
Adelaide
The Innovative Technology
Leader,
Stanford School of Business,
USA
\$9,000



Sarah Leo

General Manager
Resonate Consultants
Adelaide
Previously: General Manager
Strategy & People
Openbook Howden Design
and Print
MBA, University of Adelaide
\$7,000



Greg Lowe

General Manager
CSM Service Bodies
Brisbane
Previously: Managing Director
Mumme Tools Pty Ltd
Lonsdale
Futures Thinking & Strategy
Development Program,
Melbourne Business School
\$5,000



Nektarios Nicolaou

Group Engineering
Manager
Thomas Foods
International
Dulwich
Master of Agribusiness,
University of Adelaide
\$9,000



Ann Perriam

Previously: Finance
Controller
ElectraNet
Adelaide
MBA, University of Adelaide
\$10,000



Dwayne Povey

Principal Geologist
DGO Gold Ltd
Port Lincoln
Previously: Chief Geologist
Lincoln Minerals
Port Lincoln
Company Directors Course,
Australian Institute of
Company Directors
\$11,000
and Professional
Management Program,
University of Adelaide

"I consider myself fortunate to have received an ILF grant. It was the catalyst to undertake further study and I continue to be both inspired by what I learnt at Harvard and surprised by the opportunities presented to me since my return."
— John Salerno Dedicated Systems Australia

“Completing the Transformative Leadership Program in December 2019, run in collaboration by the University of Adelaide with the University of Austin Texas could not have come at a better time in my career. I have no doubt my capacity to lead our organisation calmly and successfully through the pandemic was enhanced through the learning gained in the program.”

— **Andrew Ramsey** Mobo Group

Mick Sanders

Founder / Managing Director
MOO Premium Foods
Glynde
Lean Japan Tour,
Shinka Management
\$5,000



Matt Sinnett-Jones

Production Director
Previously: Deputy
Production Director
ASC Shipbuilding Pty Ltd
Osborne
Program for Executive
Development,
IMD, Switzerland
\$20,000



Andrew Sluggett

General Manager / Chief
Pharmacist
CPIE Pharmacy Services and
Managing Director
Infusion Innovations Pty Ltd
Findon
Accelerate & Scale Program,
Australian Centre for Business
Growth
University of South Australia
\$15,000



Bradley Spencer

Engineering Manager
Nova Systems
Mile End South
MBA,
University of South Australia
\$5,000



Calvin Stead

CEO
Kelly Engineering
Advanced Management
Programme,
Melbourne Business School
\$10,000



Matthew Stein

General Manager / Vice
President
TriCal Australia
Wingfield
Company Directors Course,
Australian Institute of
Company Directors
\$4,000



Cameron Thompson

Chief Executive
Cowell Electric Supply
Cowell
Advanced Management
Program,
Melbourne Business School
\$10,000



Seth Thuraisingham

CEO
Consilium Technology
Adelaide
The Corporate Entrepreneur:
Driving Innovation & New
Ventures
Stanford Business School USA
\$15,000



Glenn Toogood

Member, SA Minerals &
Energy Ministerial Advisory
Council
Previously: General Manager,
Exploration and Appraisal
Services
Beach Energy, Adelaide
Previously: Regional Manager,
South East Beach Energy
Penola
Foundations for Business
Leadership,
IMD, Switzerland
\$15,000



Shaun Westcott

President & CEO
Mitsubishi Motors Australia
Tonsley
Previously: CEO
Hot Melt Packaging Services
Leadership for Senior
Executives,
Harvard Business School, USA
\$9,000

David Evans

CEO
Previously: General
Manager
Spend-Less Shoes Pty Ltd
Gillman
Company Directors Course,
Australian Institute of Company
Directors
\$4,000



Nicolas Femia

CEO / Part Owner
SA Mushrooms
Waterloo Corner
Owner President Management
Program,
Harvard Business School, USA.
\$20,000



Oscar Fiorinotto

CEO / Managing Director /
Founder / Joint Owner
Supashock
Edinburgh
Owner President Management
Program,
Harvard Business School, USA.
\$20,000



Annie Flanagan

CEO / Founder
Better Business Basics
Group & Num8erlust
Adelaide
Executive Program for Growing
Companies,
Stanford School of Business,
USA.
\$13,000



Mary Hamilton

CEO
Hugh Hamilton Wines
McLaren Vale
Executive Program for Growing
Companies,
Stanford School of Business,
USA.
\$13,000



Matthew Headland

Joint Venture Management
Lead
Oil Search Ltd
Papua New Guinea
Previously: Manager
Upstream Transformation
Santos
Adelaide
MBA, University of Adelaide, SA.
\$7,000



David Jucha

(OPV) & (CMS) Project
Manager
SAAB Australia Pty Ltd
Mawson Lakes
Previously: Program Manager
Daronmont Technologies
Pty Ltd
Mawson Lakes
MBA, University of South
Australia.
\$7,000



Dr Margaret Law

Chief Technology Officer
Naval Group
Adelaide
Previously: Engineering
Capability Manager, ASC Pty Ltd
Osborne
The Leadership Transition
Program,
INSEAD Executive Education,
France.
\$8,000



Daniel Le Feuvre

Managing Director
Australian Bee Services
Ardrossan
Masters of Agribusiness,
University of Adelaide, SA.
\$17,000



Michael Mangos

Previously: Managing
Director
SA Structural
Edinburgh
Owner President Management
Program,
Harvard Business School, USA.
\$20,000

“My experience as an ILF scholar has helped extend my understanding of myself, honed my skills as a leader, enabled me to learn from international heads of business at a globally leading institution and most importantly has resulted in real, tangible value being realised within our organisation. My deepest thanks to Geoff, Suzi and the ILF Board for their support and for the opportunity.”

— **Brett Miller** ATi Implants

“My ILF grant allowed me to find a win/win outcome for DNA Solutions and for the customer in a challenging contract negotiation. A big bonus on top of the great friendships across international networks and connections, which are truly helpful during this pandemic.”

— **Tania Jolley** DNA Security Solutions

Michael Matarazzo

Director Research & Development / Part Owner AEM Cores
Gillman Program for Leadership Development, Harvard Business School, USA. \$20,000



Chantale Millard

CEO Maggie Beer Products
Nuriootpa Driving Strategic Innovation Program, MIT, Boston, USA. \$7,000



Christine Molitor

Director Be Sustained
Adelaide Previously: CEO Scope Global Oxford Strategic Leadership Program, Said Business School, Oxford, UK. \$7,000



Hannah Murdoch

Strategic Projects Manager Previously: Executive Officer Mighty Kingdom Adelaide
MBA, University of Adelaide. \$13,000



Daniel Platten

IT Support Analyst Stratco Australia Adelaide
Previously: Owner Stellar Digital Gawler South
New Leaders Development Program, Melbourne Business School, Victoria. \$5,000



Phil Sims

CEO / Director / Owner Robern Menz Glynde
Advanced Management & Leadership Program, Said Business School, Oxford, UK. \$12,000



Maxwell Toovey

Managing Director Marlborough Capital North Adelaide
Strategic Financial Analysis for Business Evaluation Program, Harvard Business School, USA and Senior Manager's Program, Melbourne Business School. \$8,000



Carrie Trembath

General Manager, Exploration & Sub Surface Cooper Basin
Previously: General Manager Exploration & Appraisal SAWA Beach Energy Glenside
Program for Leadership Development, Harvard Business School, USA. \$20,000



Andrew Wallace

Executive Manager Commercial Enterprises Minda Incorporated
Previously: Commercial Manager Electronic Recycling Australia Underdale
Executive Program for Growing Companies, Stanford School of Business, USA. \$13,000

Kelly Baker Jamieson

Managing Director / Owner
Edible Blooms
Keswick
High Performance Leadership
Program,
Saïd Business School
University of Oxford, UK.
\$8,000

**Scott Begbie**

Managing Director
APC Technology
Cheltenham
Advanced Management &
Leadership Program,
Saïd Business School
University of Oxford, UK.
\$15,000

**Linh Bui**

Chief Financial Officer /
Commercial Manager
Smith Group Adelaide
General Management Program,
Melbourne Business School,
MIT Eliza.
\$5,000

**Phillippa Crawford**

Business Development
Manager
CMV Farms
CMV Group of Companies
Adelaide
Master of Business
Administration,
University of Adelaide.
\$10,000

**Zoe Detmold**

General Manager
Detmold Ventures
Previously: Senior Business
Manager of National Sales
Division – Delpak Australia
Detmold Group of Companies
Brompton
Transition to General
Management Program, INSEAD
France & Singapore.
\$20,000

**Gerry Doyle**

Chief Executive Officer
Tonkin Consulting
Kent Town
IMD High Performance
Leadership Course & Advanced
High Performance Leadership
Course,
IMD, Singapore and
Switzerland.
\$20,000

**Adrian Fahey**

Chief Executive Officer
SAGE Automation
Tonsley
Owner President Management
Program,
Harvard Business School, USA.
\$20,000

**Kimberley Ferguson**

Business Compliance &
Development
Holla-Fresh Pty Ltd
Tantonoola
New Leadership Development
Program,
Melbourne Business School,
MIT Eliza.
\$5,000

**Mark (Jim) Grose**

Managing Director
Axiom Precision
Manufacturing
Wingfield
Owner President Management
Program,
Harvard Business School, USA.
\$20,000

**Michael Hamilton**

General Manager
Commercial
Seeley International
Lonsdale
Corporate Business Model
Innovation Program,
Berkeley Haas
"Haas School of Business", USA.
\$5,000

**Dr Daniel Johnson**

Pro Vice Chancellor
Research Innovation
Macquarie University
Sydney
Advanced Management &
Leadership Program,
Saïd Business School
University of Oxford, UK.
\$10,000

**Victoria McClurg**

General Manager
Barossa Valley Cheese
Company
Angaston
Executive Program for Growing
Companies,
Stanford University, USA.
\$15,000

**Mark Nykiel**

CEO
Aliaxis Asia Pacific
Darlinghurst, NSW
Previously: Managing Director
Philmac
North Plympton
Global CEO Program (Wharton/
IIESE/CEIBS), China, USA and
Spain.
\$15,000

**Michael Segredos**

Director
Seima Pty Ltd
Pooraka
Blue Ocean Strategy Program,
INSEAD, France.
\$8,000

**Toby Strong**

Co-Founder / Managing
Director
Podpac Pty Ltd
Beverley
Company Directors Course,
Australian Institute of Company
Directors, Adelaide.
\$5,000

**Andrew Vlass**

Director Supply Chain
Raytheon Australia
Mawson Lakes
General Manager Program,
University of NSW – Business
School (AGSM).
\$8,000

“The ILF Scholars Network learning programs provided through 2020 and 2021 have been a great support during COVID19. In particular the strategy workshop provided insights that would not have been shared outside of this trusted Network group. I sincerely appreciate being an ILF Scholars Network member.”

— **Kelly Baker-Jamieson** Edible Blooms

Victoria Angove

Executive Director
Angove Family Winemakers
Magill
Building & Sustaining a
Successful
Enterprise Program,
Harvard Business School, USA.
\$10,000



Ryan George

Business Development
Manager
Mayfield Industries
Perth
Graduate Certificate of Business
Administration,
Torrens University Australia,
Adelaide.
\$6,000

Sophie Le Poidevin

Senior Manager,
Commercial Banking
Commonwealth Bank
Sydney
Previously: Commercial
Manager
Lenswood Cold Stores
Cooperative
Society Ltd, Lenswood
Produce Executive Program,
Melbourne Business School,
Mt Eliza.
\$5,000



Graham Hannah

Senior Consultant
Walkingwithbert
Leeds UK
Previously: Chief Operating
Officer Hostworks
Kidman Park
Senior Executive Program,
Melbourne Business School,
Mt Eliza.
\$12,000

Dr Cindy Dennis

Managing Director
Jeanie Pty Ltd
Adelaide
Previously: Deputy CEO
Lightforce Australia Pty Ltd.
Hindmarsh
General Management Program,
Harvard Business School, USA.
\$20,000



Chris Hartwig

Managing Director
Korvest Ltd
Kilburn
Strategy: Building And Sustaining
Competitive Advantage Program,
Harvard Business School, USA.
\$12,000

Wayne Duffy

Managing Director
Dulwich Bakery
Beverley
Executive Program for Growing
Companies,
Stanford University, USA.
\$5,000



Chris Henry

General Manager
Austofix
North Plympton
High Performance People Skills
for Leaders Program,
London Business School, United
Kingdom.
\$10,000

Dr Douglas Fahlbusch

Business Owner \ Director
Perioperative Solutions
Pty Ltd.
Adelaide
Excellence in the Patient
Experience Course,
Ritz-Carlton Leadership Centre,
USA.
\$5,000



Kelly Keates

Managing Director \ Owner
Zonge Engineering and
Research Organisation
Director
Liquid Integrity Systems
Edwardstown
Oxford Advanced Management
and Leadership Program,
Saïd Business School, United
Kingdom.
\$15,000

Benjamin Macey

Operations Commercial
Lead

AEMO, Adelaide
Previously: Project Manager
(Commercial & Technical)
South Australian Department
for Energy & Mining
Previously: Electrical Instrument
Engineer, GPA Engineering, Unley
New Leaders Development
Program,
Melbourne Business School,
Mt Eliza.
\$5,000



Dr Jordan Parham

COO
1414 Degrees
Adelaide
Previously: CEO
FCT Combustion - Asia Pacific
Thebarton
Advanced Management
Program,
Melbourne Business School,
Mt Eliza.
\$10,000



Michael Peachey

General Manager
SA Homecare Therapies
Adelaide
Previously: CEO
Wellness & Lifestyles Care
Services
Kent Town
Company Directors Course,
Australian Institute of Company
Directors, Adelaide.
\$2,000



Benjamin Rowe

CEO
Brauer Natural Medicine
Tanunda
Advanced Management
Program,
INSEAD, Singapore.
\$20,000



Ulli Spranz

Spranz Consulting
Previously: Managing Director
& Owner
B.-d. Farm Paris Creek Pty Ltd.
Paris Creek
Owner President Manager
Program,
Harvard Business School, USA.
\$20,000



Jarrod Starkey

General Manager
Whyalla Hose & Fitting
Services Pty Ltd.
Whyalla
Master of Business
Administration,
Australian Institute of Business,
Adelaide.
\$15,000



Dr Richard Stewart

Co-Founder \ Managing
Director
Ziltek Pty Ltd
Thebarton
Leading Product Innovation
Program,
Harvard Business School, USA.
\$10,000

Darren Turner

Managing Director
Minijumbuk
Naracoorte
The Global CEO Program,
IESE Business School.
\$25,000

Kym Welsby

Regional Director
APAC (Clearswift)
Adelaide
International Directors Program,
INSEAD, France.
\$15,000

Tom Williams

Cell leader – Machinist
BAE Systems Australia
Edinburgh
Bachelor of Innovation and
Entrepreneurship,
University of Adelaide.
\$5,000

Claire Wood

Business Owner
Careme Pastry
Tanunda
Company Directors Course,
Australian Institute of Company
Directors.
\$5,000

“The leadership and managerial skills developed during the ILF funded Scholars Course has enabled me to support strong and steady growth for LMS during a period of global upheaval.”

— **Matthew Falzon** Joule Energy

Simon Atterton

Head of Business Operations
St George College
Mile End
Previously: Commercial Manager
International Cleaning Services
(Australia) Pty Ltd, Norwood
Global Executive MBA,
University of Sydney.
\$20,000

**Dr Sarah Cannard**

Senior Engineer & Project
Manager
Nova Systems
Mile End South
Accelerated Development
for Managers Program,
Melbourne Business School,
Mt Eliza.
\$7,000

**Claude Cicchiello**

Owner / Managing Director
La Casa Del Formaggio
Glynde
Owner President Manager
Program,
Harvard Business School, USA.
\$30,000

**Emilio De Stefano**

Director \ Principal
De Stefano and Co
Previously: General Manager
Smart Fabrication Pty Ltd
Port Adelaide
Executive Program for Growing
Companies, Stanford Graduate
School of Business, USA.
\$17,500

**Meagan Franklin**

Senior Commercial
Business Manager
SIMEC Mining
Whyalla
Previously: Company Secretary
Cowell Electric Supply Pty Ltd.
Cowell
Leadership Development
Program,
Melbourne Business School,
Mt Eliza.
\$8,000

**Neil Gibbins**

Managing Director
Vintage Energy Pty Ltd
Goodwood
Previously: Chief Operating
Officer
Beach Energy Ltd.
Glenside
Mergers & Acquisitions,
London Business School, UK.
\$15,000

**Michael Harrold**

Previously: Operations Manager
Glen Carron Pty Ltd.
Beachport
General Management Program,
Melbourne Business School,
Mt Eliza.
\$7,000

**David Hart**

CEO
Dematec Group
Melrose Park
Leading for Strategic Success
Program,
Melbourne Business School,
Mt Eliza.
\$7,000

**Jeremy Hawkes**

Managing Director
Bowhill Engineering
Bowhill
Senior Managers Program,
Melbourne Business School,
Mt Eliza.
\$7,000

**Carl Heyne**

General Manager
Heynes Nurseries Pty Ltd.
Burton
Lean Japan Tour, Shinka
Management,
and Company Directors Course,
Australian Institute of Company
Directors.
\$12,000

**Anne Hinton**

CEO / Managing Director
TGR BioSciences Pty Ltd.
Thebarton
Strategic Negotiations Program,
Harvard Business School, USA.
\$10,000

**Josephine Hugman**

Logistics &
Commercialisation
Manager
Novita
Previously: Industry 4.0 Team
Leader
REDARC Electronics
Lonsdale
MBA,
University of Adelaide.
\$9,000

**Andrew Kay**

CEO / Managing Director
Wirra Wirra Vineyards
McLaren Vale
Key Executives Program,
Harvard Business School, USA.
\$17,000

**Kris Lloyd AM**

CEO
Woodside Cheese Wrights
Woodside
Company Directors Course,
Australian Institute of Company
Directors.
\$5,000

**Melanie Malig**

Head of Quality,
Environment,
WHS & RTW
Paris Creek Farms
Paris Creek
Professional Management
Program,
University of Adelaide.
\$5,000

**Johnathon Matthews**

Non Executive Director
Austofix
North Plympton
Previously: General Manager
The Pipette Company,
Thebarton
Company Directors Course,
Australian Institute of Company
Directors.
\$5,000

**Joe Matto**

CEO
Quality Plastics & Tooling
Pty Ltd.
Wingfield
Key Executives Program,
Harvard Business School, USA.
\$18,000

Stephanie Morris

Director of Industry Partnerships & Commercialisation
Medicine
Imperial College London, UK

Previously: Business Innovation Manager, Home Support Services, Parkside
MBA (second year), University of South Australia.
\$7,000

Ben Olsen

Founding Executive Director
Scope Healthcare Technologies
Austin Texas
Previously: Managing Director Re-Time Ply Ltd., Bedford Park
Leading Product Innovation, Harvard Business School, USA.
\$9,000

Rhett Payne

General Manager
Country Blinds Pty Ltd.
Mount Barker
General Management Program, Melbourne Business School, Mt Eliza.
\$8,000

Vanessa Picker

Doctoral Candidate
Department of Social Policy and Intervention
University of Oxford, Oxford, UK
Previously: CEO
FitUstin Pty Ltd., Adelaide
Transition to Leadership Programme,
University of Oxford, UK.
\$20,000

Benjamin Radford

Owner
Radford Wines
Eden Valley
Previously: Wine Maker / Managing Director
Rockford Wines
Tanunda
Company Directors Course, Australian Institute of Company Directors.
\$6,000

Andrea Mead

Managing Director / Owner
Heatlie Engineering
North Plympton
Women's Leadership Forum, Harvard Business School, USA.
\$14,000

Peter Piliouras

Chief Commercial Officer
Peregrine Corporation
Kensington
High Potential Leadership Program,
Harvard Business School, USA.
\$10,000

Patrick Power

Founder \ CEO
PowerHealth Solutions
Adelaide
Owner President Management Program,
Harvard Business School, USA.
\$20,000



Dr Derek Rogers

Engineering Lead for Defence & Space
Shoal
Previously: Designated Design Authority - Land Based Test Site, Hunter Class Frigates
BAE Systems Australia
Edinburgh
Leadership Development Program, Melbourne Business School, Mt Eliza.
\$7,000

Grant Schroeder

Part Owner/Managing Director
Maric Flow Control Australia
Magill
Global CEO Program, Wharton University delivered in three stages: Sao Paulo, Brazil, Philadelphia USA and Shanghai, China.
\$20,000

Jon Seeley

Group Managing Director
Seeley International
Lonsdale
International Management of Production,
Chalmers University of Technology, Sweden.
\$20,000

Cher Min Teo

Chief of Strategy & Marketing
GVH Aerospace
Previously: Operations Manager/ Capability Manager
Nova Systems
Mile End South
Building & Sustaining Competitive Advantage, Harvard Business School, USA.
\$12,000

Dr George Ujvary

Managing Director
Olga's Fine Foods
Welland
Lean Japan Tour, Shinka Management, and Lean Six Sigma-Black Belt Program,
University of Adelaide Executive Education Unit.
\$8,000

Michael Ward

Regional Manager
Jubilee & Amaro Select
Harvests Ltd
Waikerie
Professional Management Program,
University of Adelaide.
\$5,500

Ben Wigzell

Field Supervisor
MPC Kinetic
Adelaide
Lean Japan Tour, Shinka Management.
\$6,000

Grant Wilckens

CEO
G'Day Group Holdings (previously known as Discovery Holiday Parks Group).
Adelaide
Executive Leadership Development Program, Stanford Graduate School of Business, USA.
\$20,000

Jenna Barnes

Previously: Maintenance Standards Engineer Airways New Zealand Auckland, New Zealand
Previously: Project Manager Nyrstar Port Pirie Professional Management Program, University of Adelaide.
\$5,000



Peter Charlesworth

President / General Manager
Minelab Electronics Pty Ltd
Mawson Lakes
Advanced Management Program,
Harvard University Business School.
\$25,000



Tom Clifford

Director
Clifford Group
Adelaide
Previously: Group General Manager
Detmold Group of Companies
Brompton
Advanced Management Program,
Melbourne Business School,
Mt Eliza.
\$14,000



Mark Coupe

General Manager
Detmold Medical
Previously: Director
Virtual ED Consulting
Bellevue Heights
Previously: Operations Manager
Futuris Automotive Interiors
(Australia) Pty Ltd, Edinburgh Park
Senior Management Program,
Melbourne Business School,
Mt Eliza.
\$8,000



Peter Cox

Managing Director
Gelista Premium Gelati
Ridleyton
Leadership 21: Owner /
Manager Program,
Melbourne Business School,
Mt Eliza.
\$10,000



Andrew Downs

Founder, Owner and
Executive Director
Sage Group Holdings Ltd
Tonsley
Owner President Management
Program,
Harvard University Business
School.
\$25,000



Pia Goetjens

Field Maintenance
Supervisor
BHP
Adelaide
Previously: Customer Service
Technician
REDARC
Lonsdale
Bachelor of Management
Course,
University of South Australia.
\$5,000



Jeremy Hawkes

Managing Director
Bowhill Engineering
Bowhill
Lean Manufacturing Japan Tour
Shinka Management &
the Australian Industry Group.
\$7,000



Hamish Hogben

General Manager
Evo Hair
Adelaide
Previously: General Manager
Operations
Mumme Tools Pty Ltd.
Lonsdale
Management Acceleration
Program,
INSEAD, France.
\$12,000



Richard Inwood

Proprietor
Inwood Real Estate
Springton
Previously: Manager of People
& Business
Tindo Solar
Mawson Lakes
Executive Development
Program,
Wharton University,
Philadelphia, USA.
\$15,000



Alexander Jenner-Oshea

Design and Engineering
Manager
Century Engineering
Edinburgh Parks
Previously: Project Engineer
SJ Cheesman
Port Pirie
Master of Business
Administration,
University of Adelaide.
\$10,000



Shane Kelly

Managing Director
Kelly Engineering
Booreroo Centre
Global CEO Program,
Wharton University in three
modules:
Sao Paulo, Philadelphia and
Shanghai.
\$25,000



Ben Marsh

National Sales \ Marketing
Manager
REDARC Electronics
Lonsdale
Master of Business
Administration,
University of Adelaide.
\$10,000



Stephanie Morris

Director of Industry
Partnerships &
Commercialisation Medicine
Imperial College London, UK
Previously: Business Innovations
Manager
Home Support Services, Parkside
Master of Business
Administration,
University of South Australia.
\$10,000



Dale Roberts

Group Managing Director
KOJO
Kent Town
Leadership 21: Owner /
Manager Program,
Melbourne Business School,
Mt Eliza.
\$9,000



John Scott

General Manager Operations
Australia and the Philippines
Detmold Group
Brompton
Previously: Manufacturing Director
/ General Manager
SMR Automotive
Lonsdale
Advanced Management Program,
Melbourne Business School,
Mt Eliza.
\$15,000

Marc Allgrove

Partner
Evans & Ayers
Adelaide
Previously: Chief Executive Officer,
Chapel Hill Wines, McLaren Vale
Company Directors Course,
Australian Institute of Company
Directors.
\$5,000



Rick Candy

Event Medic
St John Ambulance
WA
Previously: Operations Manager
Candy Canvas, Tintinara
Graduate Certificate in Business
Administration,
University of South Australia.
\$10,000



David Heaslip

Managing Director
Century Group
Edinburgh North
Future Thinking & Strategy
Development Program plus
Advanced Management
Program,
Melbourne Business School,
Mt Eliza.
\$23,000



Kelly Keates

Managing Director/Owner
Zonge Engineering and
Research Organisation
Edwardstown
Director
Liquid Integrity Systems
Leadership Best Practices
Course,
Harvard Business School.
\$12,000



Eddie Lane

Partner
Previously: Sales & Marketing
Manager
Cold Logic Industrial
Refrigeration Specialists
Port Adelaide
Previously: State Manager,
Integra Water Treatment Services,
Regency Park
Advanced Management Program,
Melbourne Business School,
Mt Eliza.
\$16,000



Dr Michael Riese

Business Development
Manager Defence & Research
Cold Logic Industrial
Refrigeration Specialists
Port Adelaide
Previously: Business Development
Manager J&H Williams, Port
Adelaide
Senior Managers Program,
Melbourne Business School,
Mt Eliza.
\$8,000



Richard Sims

Chief Operating Officer
Robern Menz (Mfg) Pty Ltd
Glynde
Leadership Development
Program,
Melbourne Business School,
Mt Eliza.
\$7,000



Steve Todd

General Manager
Kay Brothers
Amery Vineyards
McLaren Vale
Previously: General Manager
Scan Conversion Services,
Adelaide
Company Directors Course,
Australian Institute of Company
Directors.
\$5,000



Corrina Wright

Winemaker \ Director
Oliver's Taranga Vineyards
McLaren Vale
Leadership 21 Program,
Melbourne Business School,
Mt Eliza.
\$14,000

“My learnings and connections with peers from the ILF Scholar network gave me the confidence and skill set to pivot our services and successfully restructure our business in response to COVID19.”

— **Charlie Aykroyd** Australian Green Clean

Benjamin Bryant

Vice President Winemaking
Mission Hill Family Estate
Winery
Toronto, Canada
Previously: International Brand
Development Director – Asia
Premium Wine Brands –
Pernod Ricard, Hong Kong
Master of Business
Administration,
University of Adelaide.
\$12,000



Jock Duncan

Electronics Design Engineer
Minelab Metal Detectors
Mawson Lakes
Previously: Airborne Systems
Maintainer
Fugro LADS Corp.
Kidman Park
Electrical & Electronics Degree,
University of Adelaide.
\$3,000



Nigel Godde

Big Dutchman Livestock
Equipment Co
Beijing, China
Previously: CEO Worldwide
Operations Michel Pty Ltd, North
Adelaide
Advanced Management
Program,
Melbourne Business School,
Mt Eliza.
\$15,000



Alf Ianniello

Previously: Chief Executive
Officer
Detmold Group of
Companies
Brompton
Global CEO Program,
Wharton University in three
modules:
Sao Paulo, Philadelphia and
Shanghai.
\$25,000



Rebecca McDonald

Aeronautical Engineer
Nova Systems
Canberra
Previously: Aeronautical
Engineer Aeronautical
Engineers Australia
Mawson Lakes
New Leaders Development
Program,
Melbourne Business School,
Mt Eliza.
\$10,000



Simon Ridgway

Head of Engineering -
Gas & Renewables
AGL Energy
Adelaide
Previously: Production Director
Air Warfare Destroyer Alliance
Techport Australia, Osborne
General Management Program,
Harvard Business School.
\$25,000



Cameron Schubert

Group Technical Director
Future Global Resources
Brisbane
Previously: General Manager,
Kanmantoo
Copper Mines, Kanmantoo
Company Directors Course,
Australian Institute of Company
Directors.
\$5,000



Daniel Wilson

CEO
DBG Technologies Pty Ltd
Eastwood
Master of Business
Administration,
Australian Institute of Business
Management.
\$12,000

“With an everchanging business environment, like we have been navigating recently, being part of a network of stellar, highly educated, South Australian CEO’s is incredibly rewarding and powerful.”

— **Corrina Wright** Oliver’s Taranga Vineyards

Anthony Kittel

Managing Director
REDARC Electronics
Lonsdale
Owner / President
Management Course,
Harvard Business School.
US\$30,000



Christine Stock

Software Applications
Engineer
Cadgroup
Adelaide
Leadership training in IT.
\$13,000

HOW THE ILF SUPPORTS EMPLOYERS

Employers of choice normally offer meaningful personal development opportunities.

Supporting talented employees to apply for an ILF grant can provide a significant benefit to an employer's training structure.

ILF CEO, Geoff Vogt, will meet employers and their employees to explain and clarify how the ILF grant program operates and how applicants can improve their prospects of submitting a successful application.

In addition, Geoff is happy to address industry functions to explain the ILF in general, and he can arrange for ILF Scholars to speak at functions or to groups of people. This is often very constructive because they can explain the process, their reasons for applying and the benefits from their personal point of view.

Employers are welcome to contact Geoff on 0457 900 202, 8394 0016 or ceo@industryleaders.com.au to make the appropriate arrangements.

HOW THE ILF SUPPORTS APPLICANTS

Potential applicants are welcome to contact ILF CEO Geoff Vogt on 0457 900 202 or ceo@industryleaders.com.au to discuss whether their chosen field and ideas are likely to meet the ILF criteria for success. Geoff is keen to speak to as many applicants as possible and will provide guidance to help candidates maximise their chances of lodging a winning application.

Every year, successful applicants often speak to Geoff several times to better understand the application process. While guidance will be provided, the content of any submission remains the responsibility of the applicant.

ILF Scholars are often willing to advise applicants about the process and how they selected their chosen course of study. Geoff is happy to facilitate these contacts.

APPLICATION CLOSING DATE FOR 2022

Applications can be lodged before the closing date of

Tuesday 31 May

Apply on line at www.industryleaders.com.au

Enquiries to

Geoff Vogt: CEO

- **phone: (08) 8394 0016**
- **mobile: 0457 900 202**
- **email: ceo@industryleaders.com.au**



HOW TO CONTACT ILF

The ILF is located on the first floor at 45 Greenhill Road, Wayville SA 5034. If you wish to visit, it is best to call to make an appointment to ensure someone will be available to meet you.

Our contact details are:

Suzi Douflias: Office Manager

- phone: (08) 8394 0017
- fax: (08) 8394 0099
- email: suzi@industryleaders.com.au

Geoff Vogt: CEO

- phone: (08) 8394 0016
- mobile: 0457 900 202
- email: ceo@industryleaders.com.au

Alternatively, you might prefer to contact one of the Honorary Board Members or one of our Honorary Ambassadors, listed below:

HONORARY BOARD MEMBERS

Richard Colebatch
Honorary President

Mark Canny
Honorary Deputy President / Treasurer

David Heaslip
Honorary Vice President

Paul Haysman
Honorary Immediate Past President

David McNeil
Emeritus Member

Kris Lloyd AM
Honorary Board Member

Stephen Ludlam
Honorary Board Member

Stephen Myatt
Honorary Board Member

Stephen Richter
Honorary Board Member

Chris Stathy OAM
Honorary Board Member

Michael Tamasi
Honorary Board Member

HONORARY ILF AMBASSADORS

Leon Andrewartha
Geoff Blomfield
Bob Cole
Carol Dean
Andrew Downs
Adrian Fahey
Susan Frazer
Robert Gerard AO
David Hart
Anne Hinton
Alexander Kachellek
Bernie Kavanagh
Anthony Kittel
Eddie Lane
Mike Nagel
Mark Nykiel
Grant Price
Jim Rump AM
Allan Swinstead AM
Mike Terlet AO
Paul Thomas
Grani Tinney
Steven Todd
Darren Turner
Jonathan Westover
David Wilson



www.industryleaders.com.au